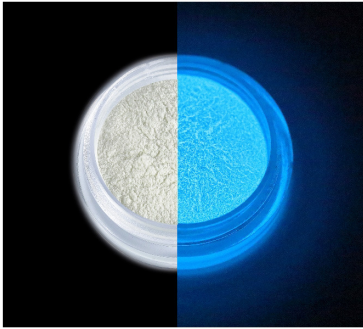


KOLORTEK GLOW IN THE DARK



KT-GSB01 SC
Skye Blue
35-45 μm



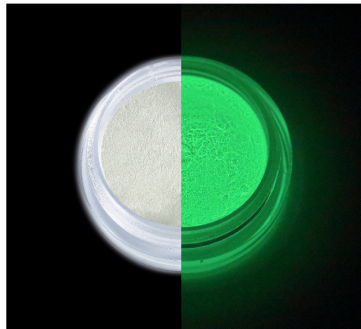
KT-GTG01 SC
Tender Green
5-25 μm



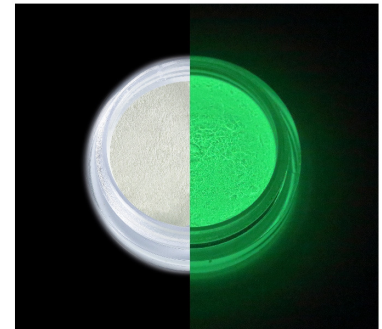
KT-GBG02 SC
Blue Green
65-75 μm



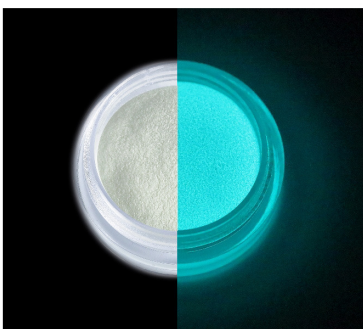
KT-GBG02-2 SC
Blue Green
15-25 μm



KT-GYG03 SC
Yellow Green
12-25 μm



KT-GYG03-2 SC
Yellow Green
5-10 μm



KT-GYG-10
Yellow-Green
20-38 μm